

3G Solution with led server

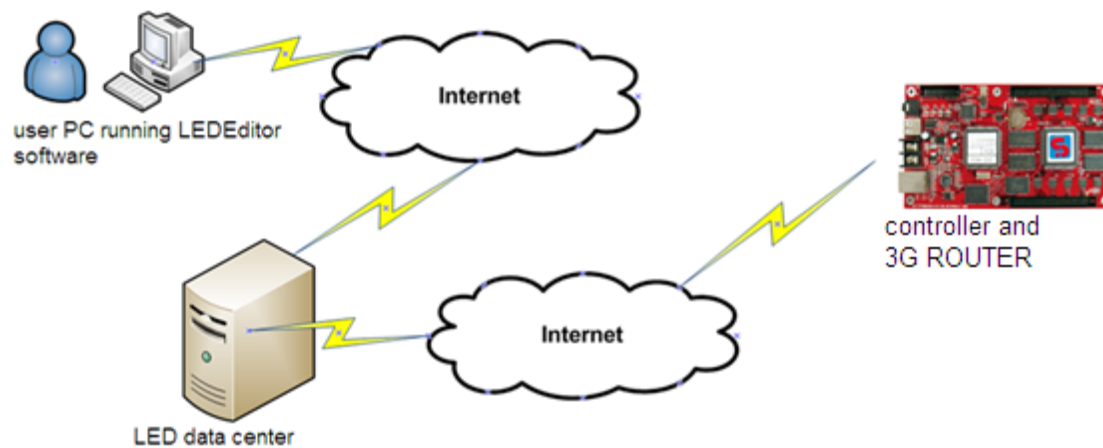
Hardware:

1. M-series and G-series controller (M10, M20, M31, G31, G30)
2. 3G router, please prepare a 3G SIM card by yourself
3. Server---provided by Xixun Company or customer who builds their own server

Software:

1. LedEditorv9 (LATEST VERSION FROM www.ledsign.cc)
2. LedSet2.0
3. LedDataServer (for building server) ----provided by xixun Company
4. Static IP or DNS customer-side software---this for customer who builds their own server

Connection diagram:



1. Controller gets access to internet via 3G router.
2. Control screen by multiuser in remote place. Different users have different permission.
3. Controller and user software message will be exchange in LED data center.

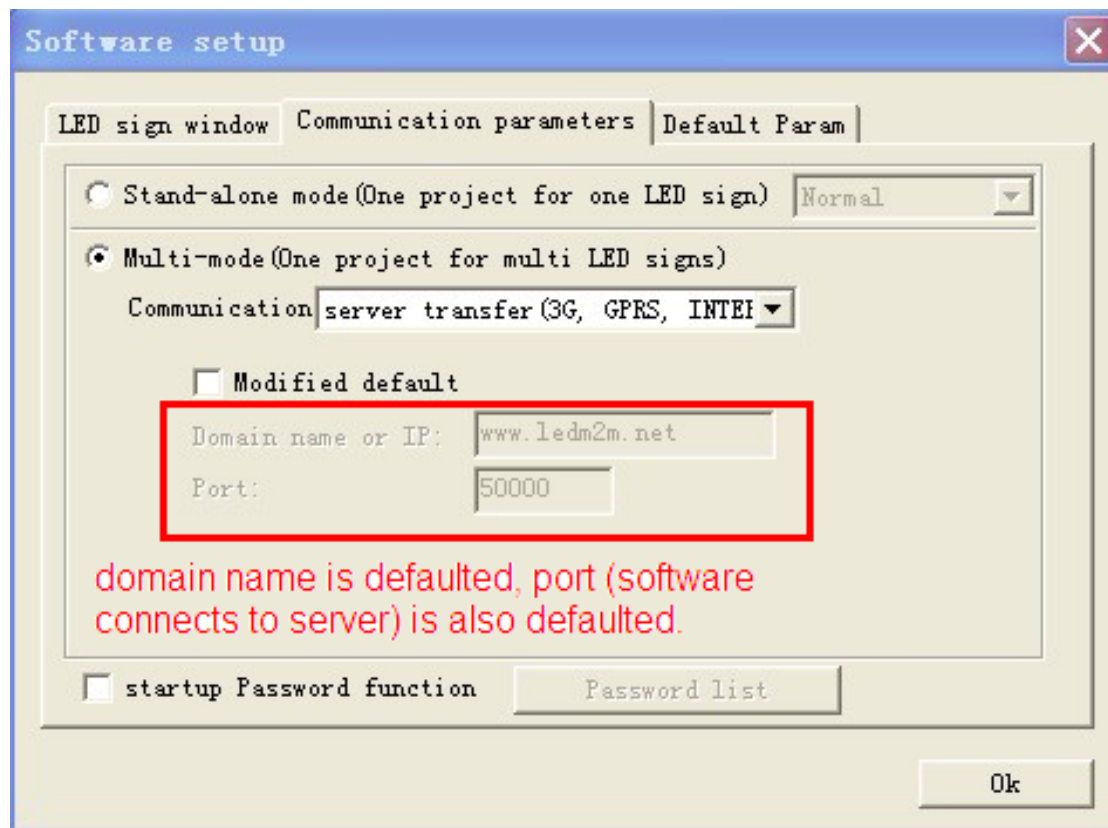
Operation steps

Step1, run LedEditorV9 and enter Hardware setup, write down master name. Server Domain or Server IP, service port (50001) is defaulted by Xixun Company. But customers who build own Server needs to change these parameters.

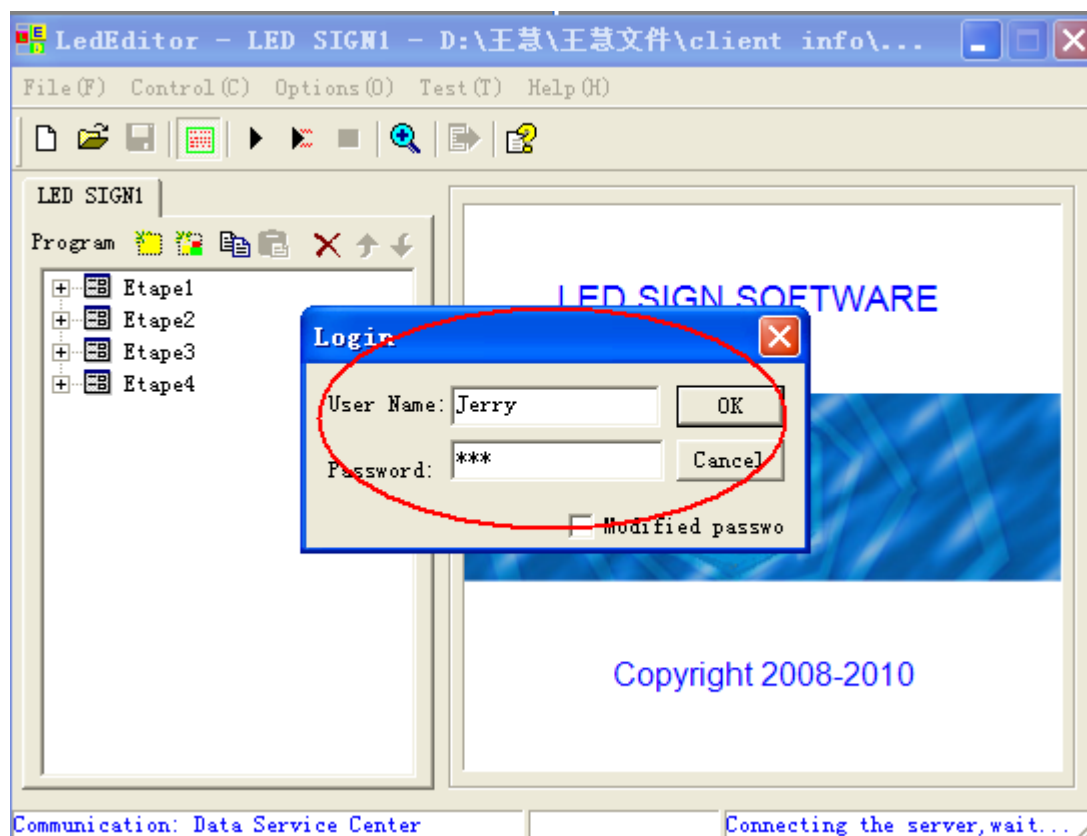
The screenshot shows the 'Hardware setup' window with the following fields and annotations:

- IP parameter:** IP address: 192.168.8.88, Subnet mask: 255.255.255.0, Default: 192.168.8.1. A 'Send' button is next to the Subnet mask field.
- Serial port parameter:** Serial: COM_RS232, Baudrate: 57600. A 'Send' button is next to the Baudrate field.
- Link Server:** Link Server. **Server Domain:** www.ledm2m.net (highlighted with a red box and text 'this is default domain name'). Domain backup: [empty]. **Server IP:** [empty]. **Service port:** 50001 (highlighted with a green box and text 'press F6 it will appear'). Custom Name: G30-222-00001. A 'Send' button is next to the Service port field.
- Data center:** Data center. **Master:** Jerry (highlighted with a blue box and text 'write down user name and send'). A 'Send' button is next to the Master field.
- ID config(485 serial or RF):** 1 (1~239). A 'Send' button is next to the ID field.
- ID[1-65535]:** 1.
- Other process:** Other process. A 'Close' button is at the bottom right.

Step2, select "server transfer (3G, GPRS, INTERNET)" under multi-mode in Software setup. Domain name or IP, port (50000) are defaulted by Xixun Company. Customers who build own server needs to change these parameters.



Step3, click on Send button and login user name and password.



Step4, check and send program after login.

Here, you will see all controllers under your username so that could control them at the same time.

