



BILLBOARD TAXI MEDIA INC

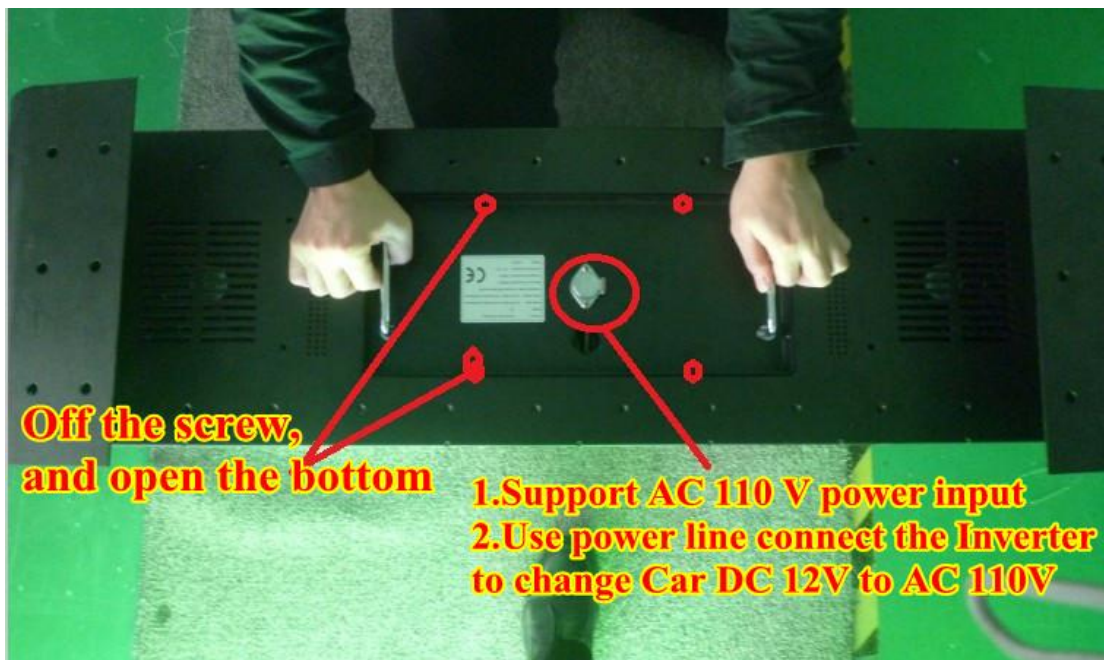
www.billboardtaximedia.com

Add: 3225 McLeod Dr., Las Vegas, NV 89121 Tel: +1-702-214-1106

P5 Taxi Top LED Sign (960*320mm) User Manual

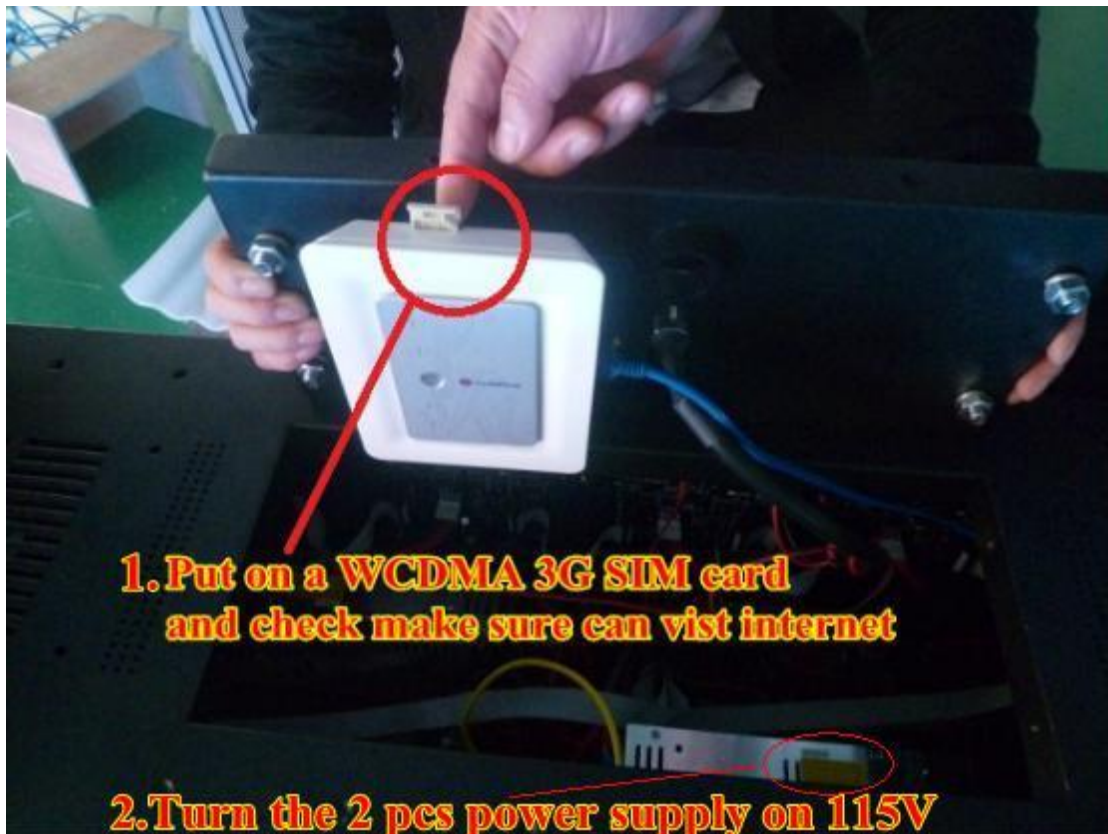
1. SIGN SET UP

A. open the bottom of led sign, and put on a **3G WCDMA SIM card** check it can visit internet.



Inserting 3G SIM card steps



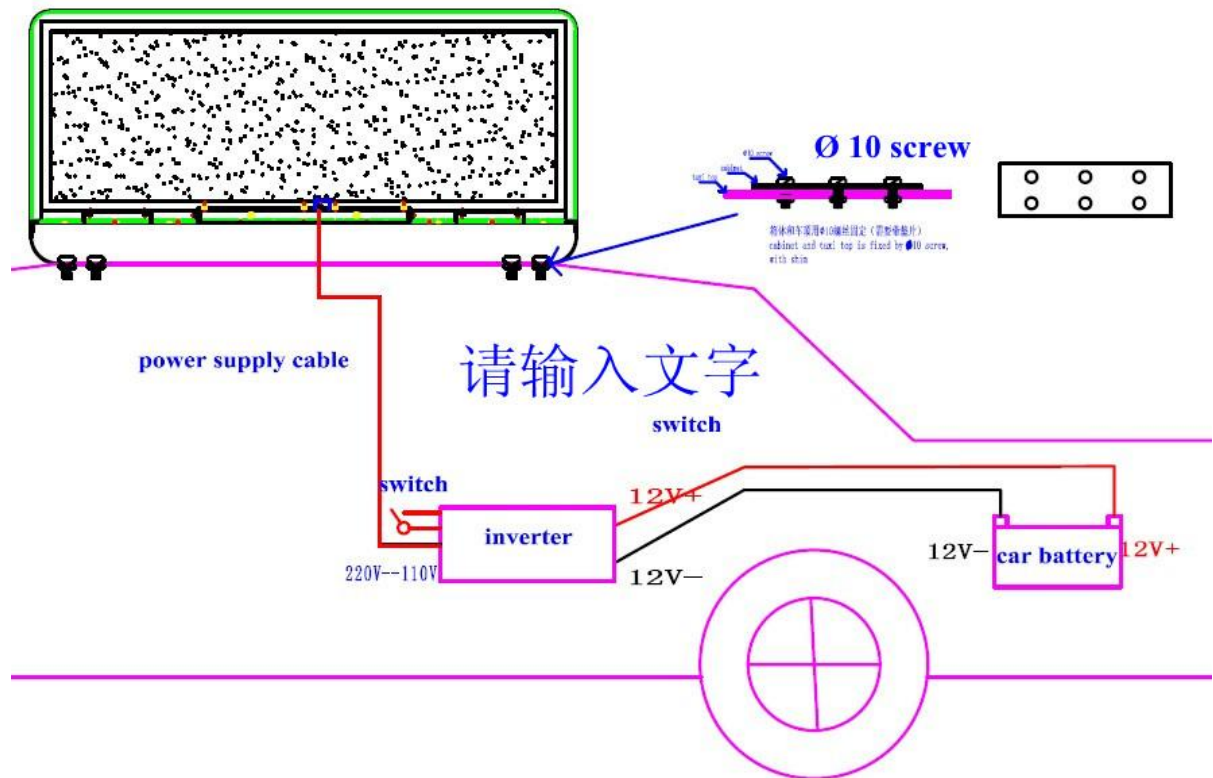


- B. Turn the Power supply from 230V to 115 V, it is important !
- C. Use our Power line , can use AC 110 V test at home, make sure all is working well

D. Test with car power, Use the **Inverter** change the **Car DC 12V** to **AC 110 V**, make sure working well, then can fixed on car roof



(maybe this line of Inverter will short, can make longer in local)



2. Software

1. Download our software, and set up

A. go to our website to download two software:

www.billboardtaximedia.com

1. ▶ LedSet2.0

2. ▶ LedEditor_v9



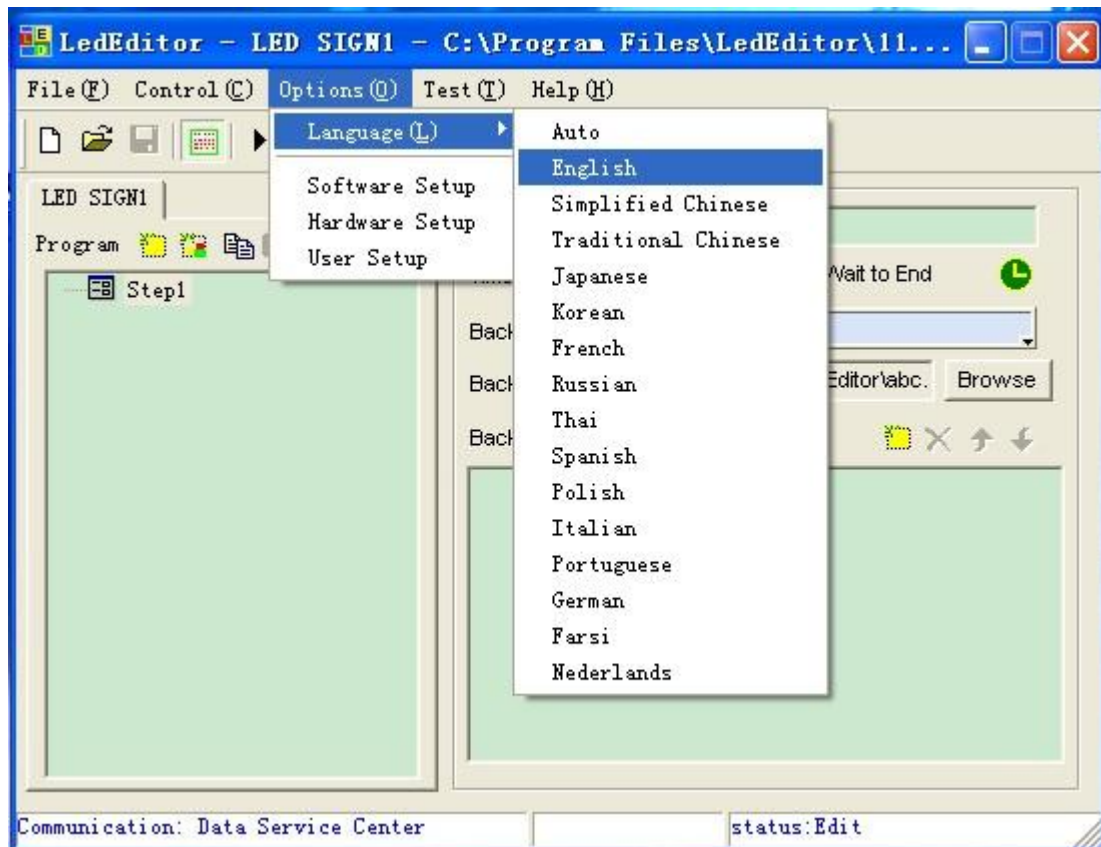


(put on this software on your windows)

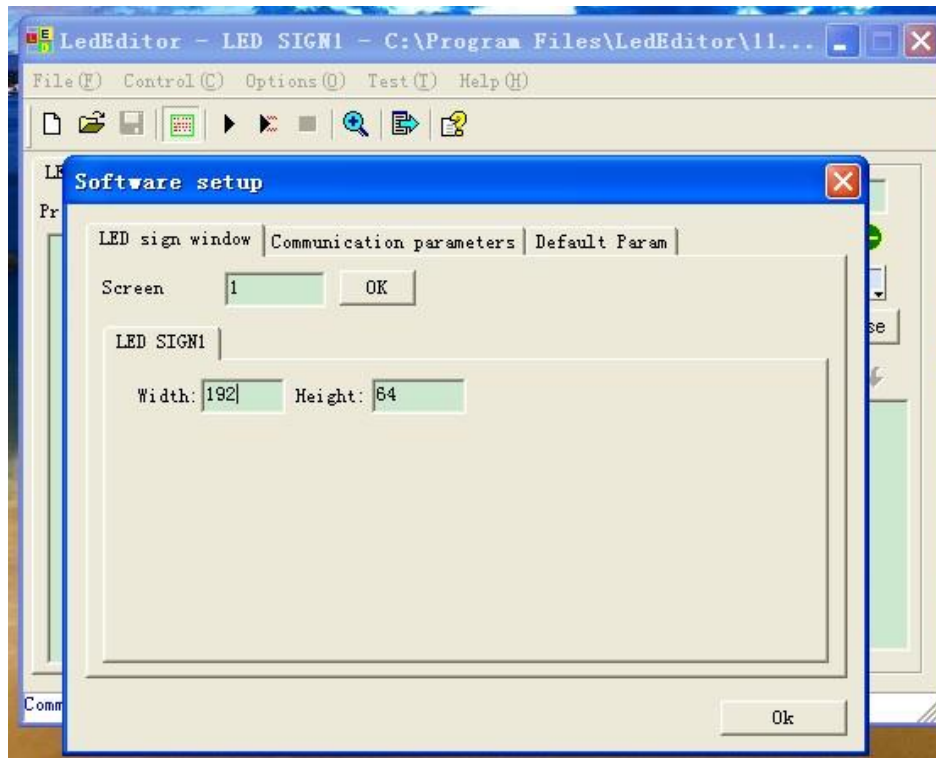
B. open it, and set up, then you get a software called **led editor**.

Click it, there is a window like that

(Picture1)

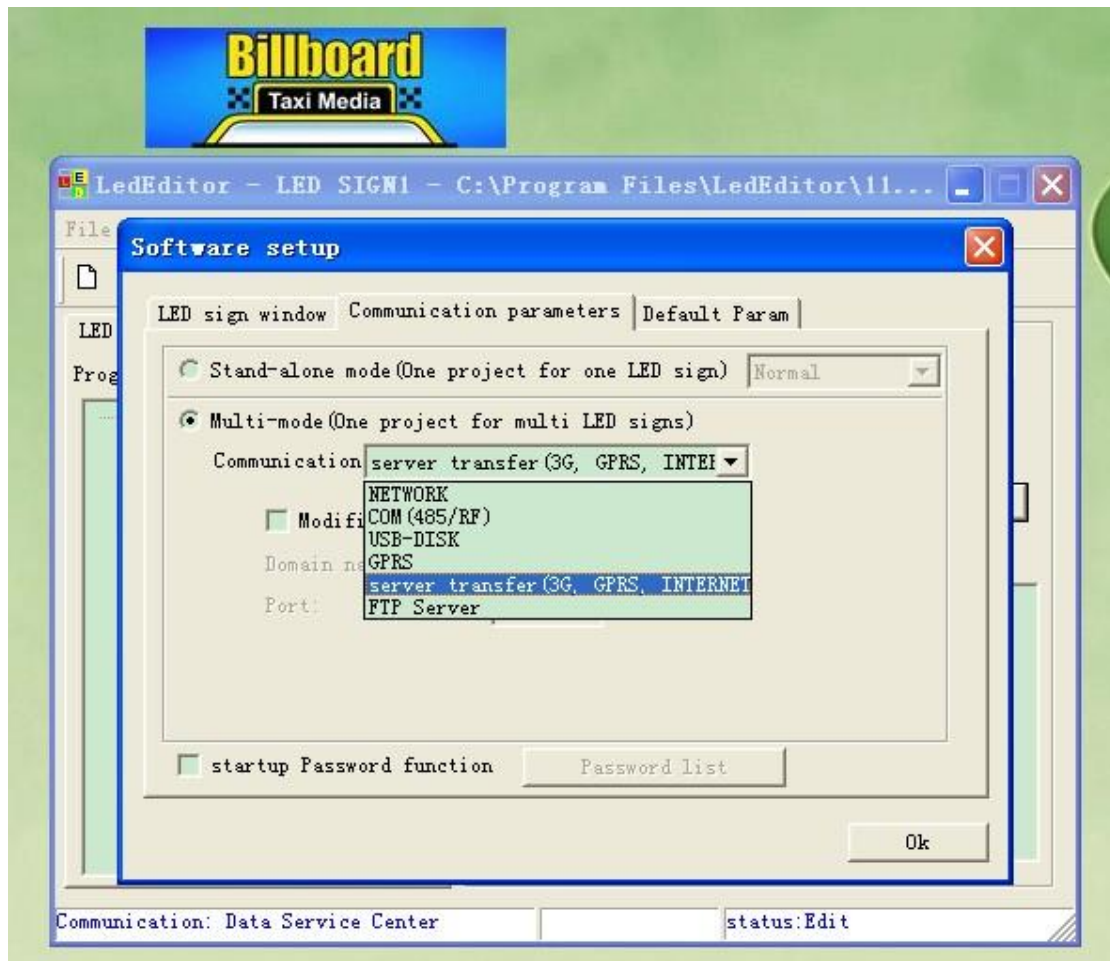


C. Click the **Options**, choose **language setup**, choose **English**,



And then choose **Software setup**, change the parameter like in the picture, **W:192,H:64**

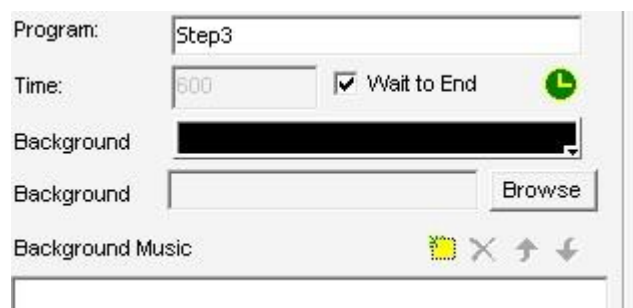
And then click the **communication parameters**, choose Multi-mode, and choose **3G,GPRS**.



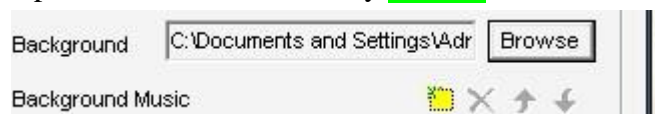
And then back to the manual.



Click the yellow logo, to add the advertising that you want to display.
You will get a image like that.



Upload the advertisement by **Browse**.

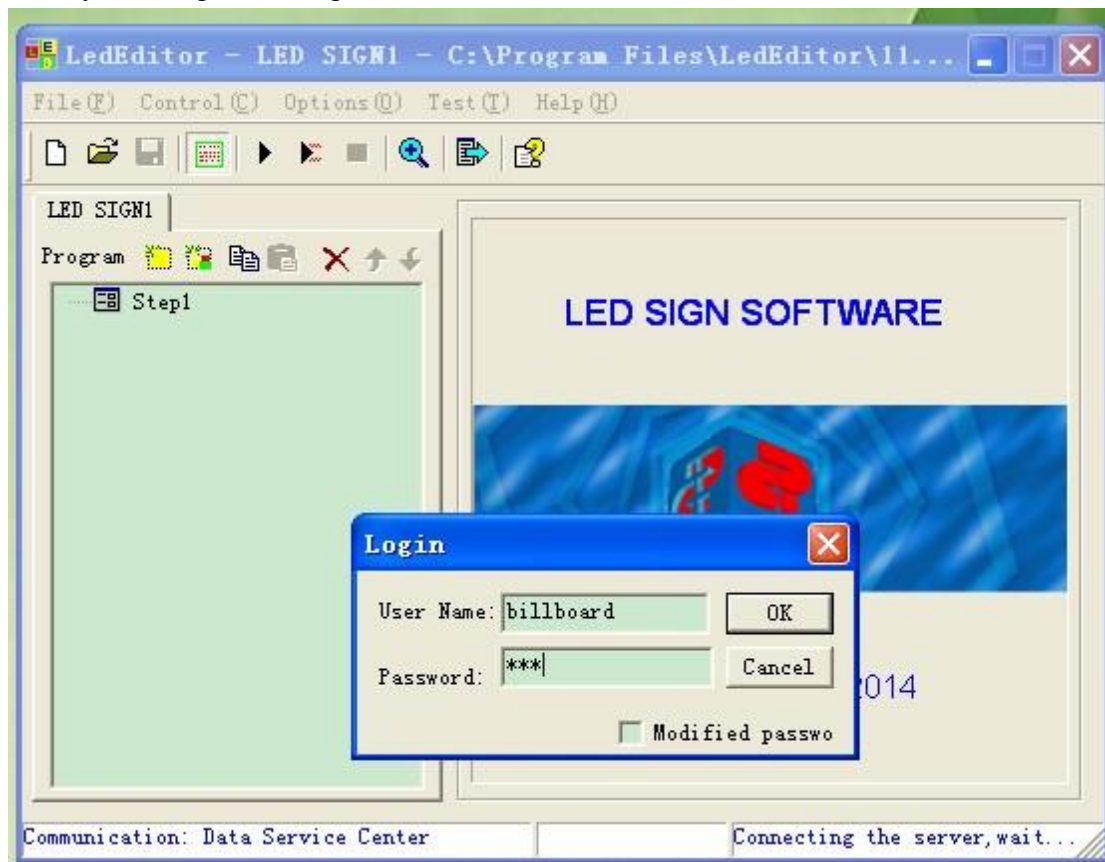


And then click the left button, sent to the sign



And then click the left button, sent to the sign

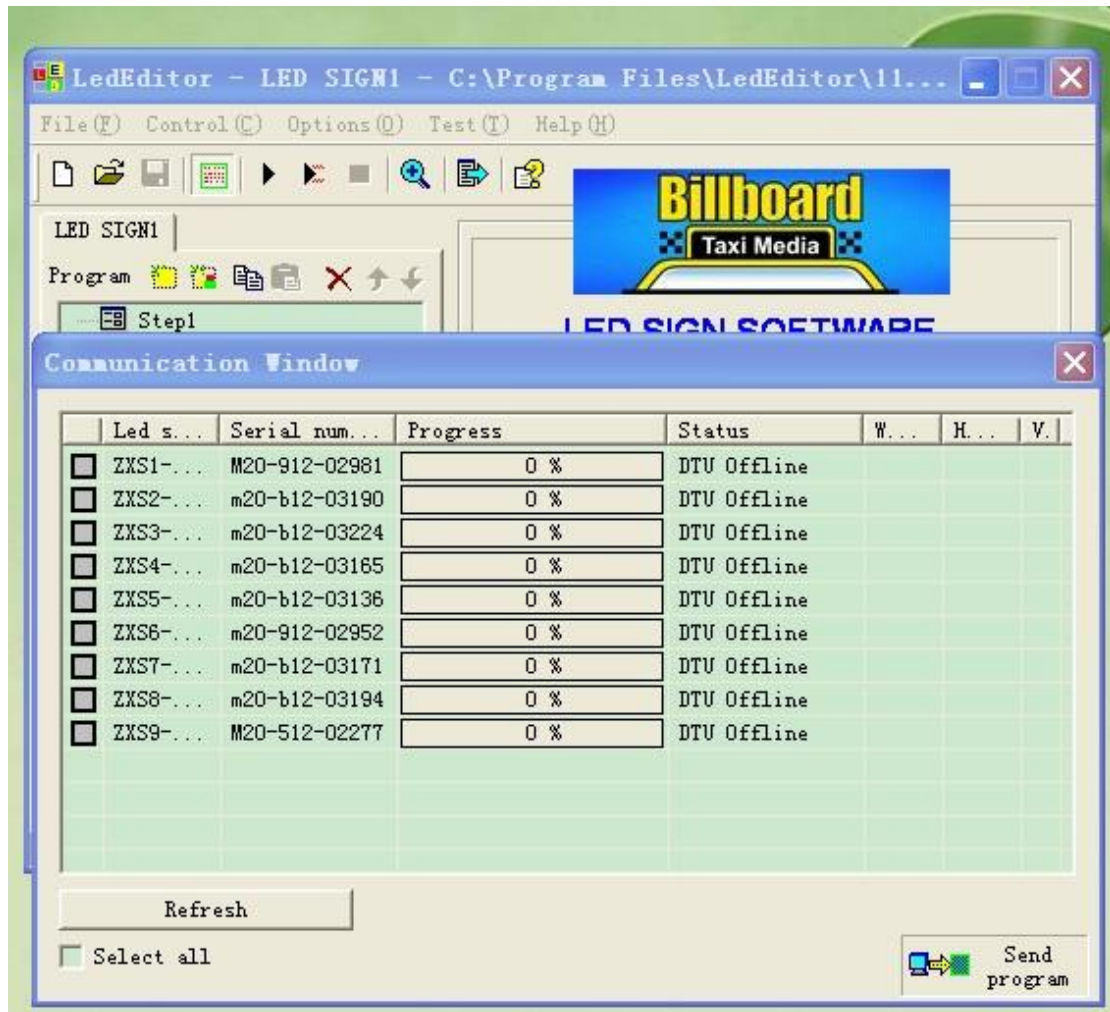
Then you will get an image like that.



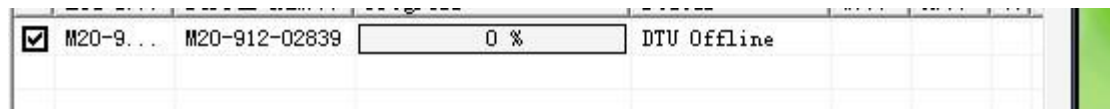
The user name is: billboard

Password is: 888

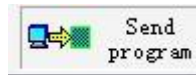
Enter them you will get another image.



Mark it.



And click the below button then the operation is done.



That is ok , LED sign will receive the info and work..