

Build own server

Sometimes customers need to control many screens and want to use their own server, which will be faster to sending programs.

Two methods to building server:

1. Xixun Company provides following things:

- a. User name and password
- b. Provide server IP /domain name for controller connects with server; default port to monitoring controller is **50001**
- c. Provide server IP/domain name for software connects with server, default port to monitoring user **50000**

2. Customers build it totally by themselves:

Preparations:

- a. Hardware: PC with stable windows system always gets access to internet and power on.
- b. Software: LEDdataserver.exe provided by Xixun Company. Key provided by xixun engineer.
- c. Static IP address
- d. If not static IP address then need has a DNS.

Steps for method 2:

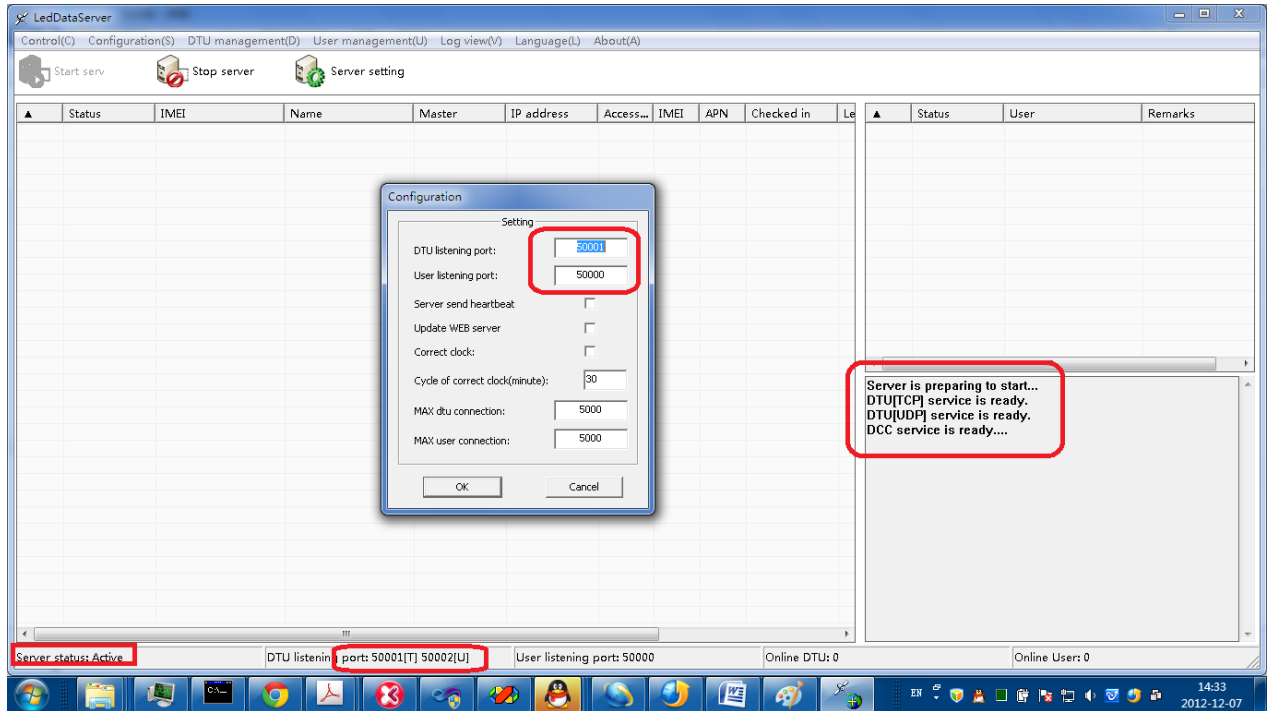
Step1, PC gets internet through router then running LedDataServer.exe software

Step2, after installing it, click on Start server button and then click on Server setting and then setup parameters as following:

Set 50001 for DTU listening port

Set 50000 for user listening port

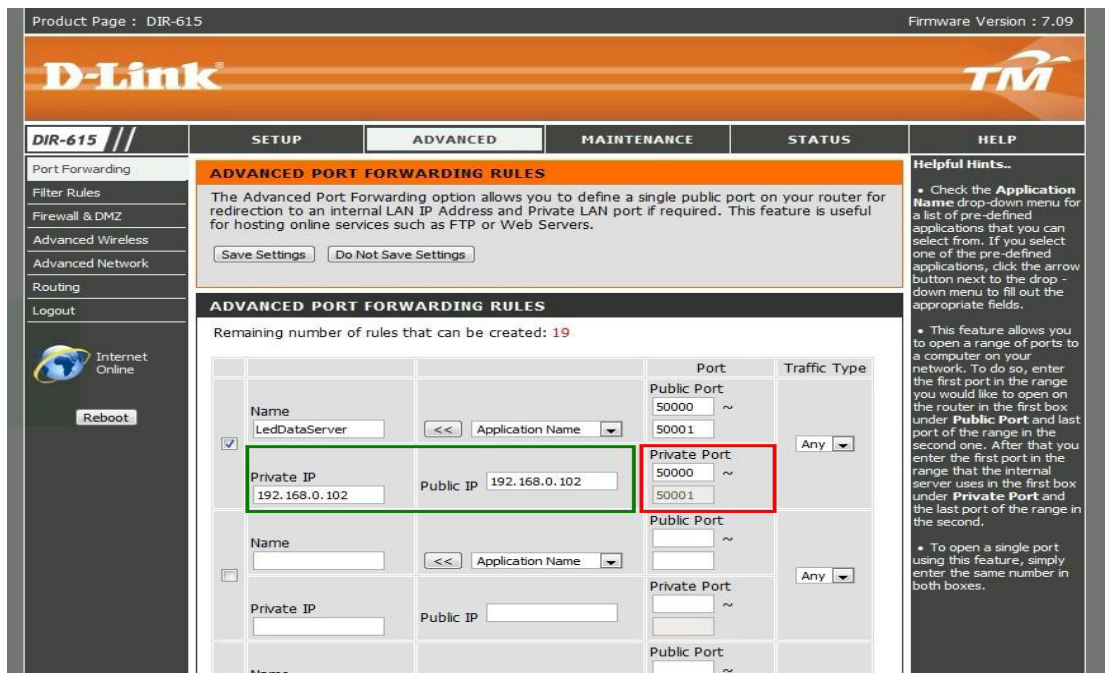
When you setting these parameters, on the right part will see the corresponding status information



Step3, set port forwarding in Router, Forwarding port 50000-50002 to server, IP address is the server's IP in LAN.

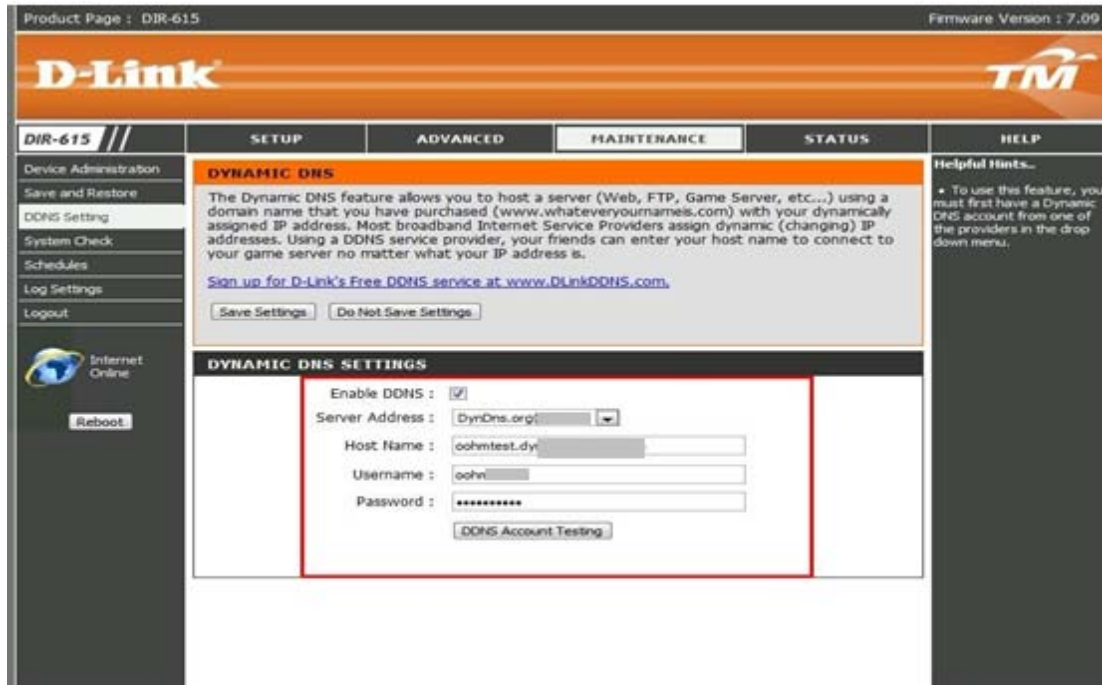
Login the router and then enter port forwarding, enter the port range 50000~50002 for private IP (that is the LAN IP address of the server PC).

Note: each router's interface is different maybe; here we just take one for example:



Step4, if server IP is not static then should use DNS. Apply a valid Domain name in advance and download the customer-side. Please login domain name in router or login customer-side.

Or login the DNS in router, here, take one router for example:



If server PC has static IP address then no need to do anything in this step.

Step5, apply a new user name and password for your end customers

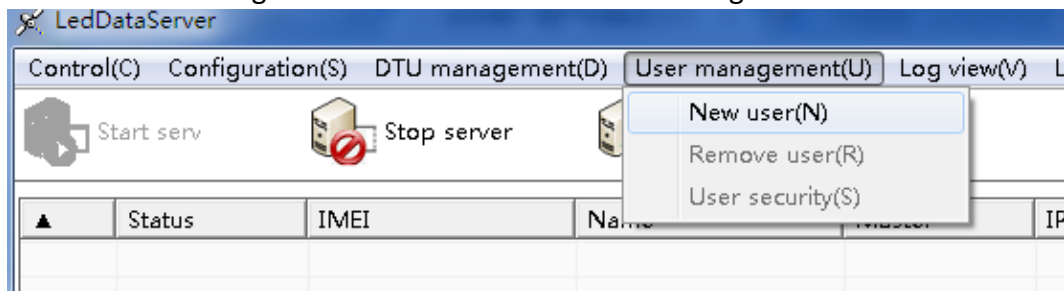
Take one for example:

User name: alahover

Password: 888

Remarks: shanghai xixun Company

Click on User management-→new user and then a dialogue box comes out:



New user

User information

User name:

Password:

Password confirm:

Remarks:

OK Cancel

LedDataServer

Control(C) Configuration(S) DTU management(D) User management(U) Log view(V) Language(L) About(A)

Start serv Stop server Server setting

▲	Status	IMEI	Name	Master	IP address	Access...	IMEI	APN	Checked in	Le	▲	Status	User	Remarks
1	online	M31-412-00001	M31-412-00001	alahover	58.247.9.162	Cable			15:22:20 201...		1	offline	alahover	www.xixunled.com

Step6, opening lededitorV9 software and then login this user name and password, then will see the user online status and see your DTU: M31 card's serial number.